



## TECHNICAL DATASHEET

### TOPLA ENERGY E45

#### ORDER INFORMATION

TAB ID

**1000203**

Short Code

**E45**

DIN Marking

**54502**

EAN Code

**3838807027367**

Quantity per EU/CNT pallet

**72/120 pcs**

#### TECHNOLOGY

Primary Function

**Engine Start**

Battery Technology

**Flooded**

Grid Type (pos/neg)

**Expanded/Concasted**

Grid Alloy (pos/neg)

**Ca/Ca**

Separator

**PE**

Electrolyte (g/cm<sup>3</sup>)

**1,28**

#### TECHNICAL INFORMATION

Voltage (V)

**12**

Capacity C20 (Ah)

**45**

CCA -18°C EN (A)

**420**

RC (min)

**71**

LxWxH (mm)

**207x175x175**

Total Weight (kg)

**11.2**

#### BOX DESIGN

Box Type

**L1B**

Cover Type

**Kamina**

Colour

**Red**

Layout

**0**

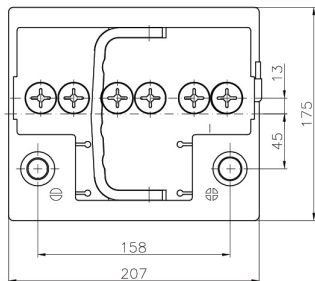
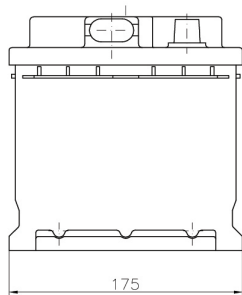
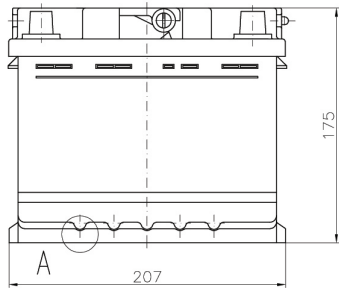
BHD

**B13**

Terminal

**1**

## DRAWING



## BHD



## LAYOUT



## TERMINAL



# TECHNICAL DATASHEET

## TOPLA ENERGY E45