



TECHNICAL DATASHEET

TAB OEM OEM70A

ORDER INFORMATION

TAB ID

1001229

Short Code

OEM70A

DIN Marking

57012

EAN Code

3838807038615

Quantity per EU/CNT pallet

51/80 pcs

TECHNOLOGY

Primary Function

Engine Start

Battery Technology

Flooded

Grid Type (pos/neg)

Expanded/Concasted

Grid Alloy (pos/neg)

Ca/Ca

Separator

PE

Electrolyte (g/cm³)

1,28

TECHNICAL INFORMATION

Voltage (V)

12

Capacity C20 (Ah)

70

CCA -18°C EN (A)

640

RC (min)

120

LxWxH (mm)

278x175x190

Total Weight (kg)

17.6

BOX DESIGN

Box Type

L3

Cover Type

Kamina

Colour

Black

Layout

0

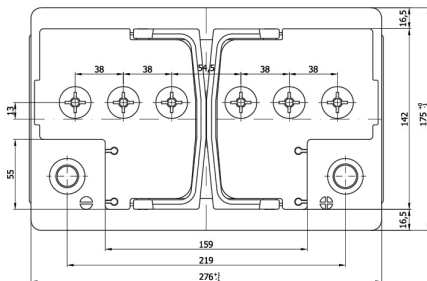
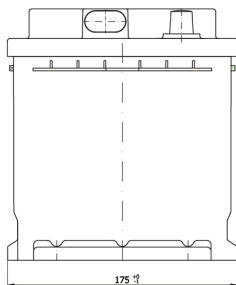
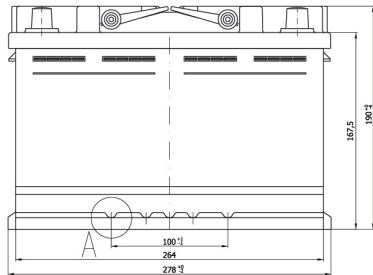
BHD

B13

Terminal

1

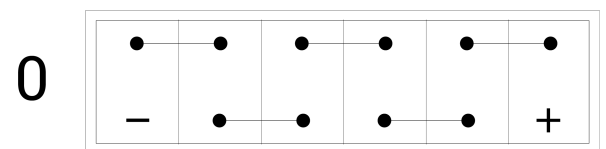
DRAWING



BHD



LAYOUT



TERMINAL



TECHNICAL DATASHEET

TAB OEM OEM70A

TAB d.d, Polena 6, SI-2392 Mežica, Slovenia, www.tab.si